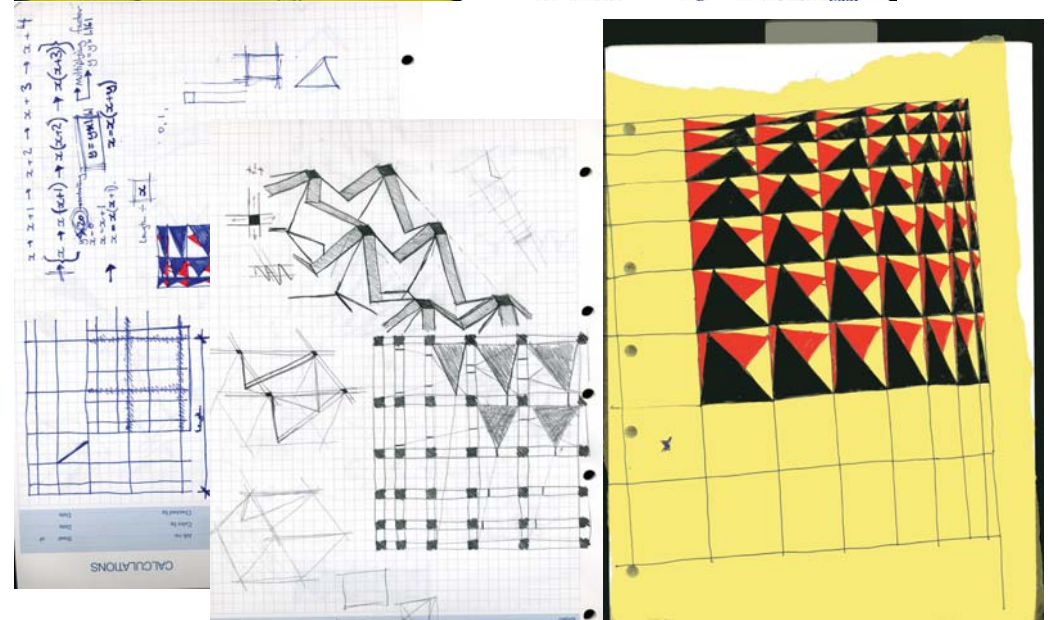
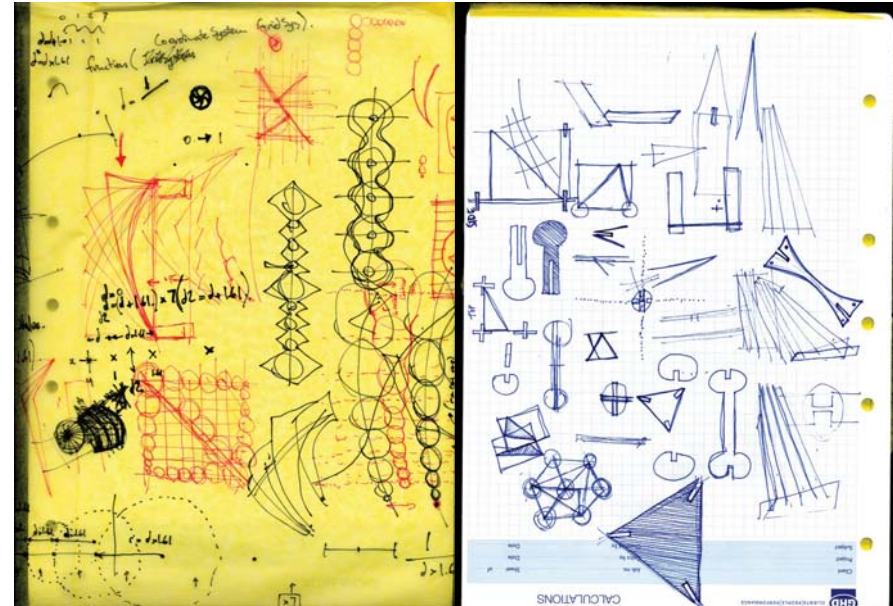


## Digital Explorations.

The computer has taught me to once again draw and to build and to test. It seems somehow ironic to me, and while the previous may be an overstatement, my adventures into parametric design have certainly asked me to materialise and describe the resultant form physically through pencil and MDF.

Using a computer generative technique when designing has tested and questioned my personal design process.....

For myself, it has turned the design process on its head. The building and its form are derived from the component and its fabrication, function makes form, not the Sullivan way with which i am accustomed to.



UNTITLED no.5  
SCOTT MASON  
BEN DOHERTY & BHARAT DAVE & EUGENE CHEAH, MU, 2008  
ABSTRACTION FABRICATION & DIGITAL DESIGN APPLICATIONS



UNTITLED no.5  
SCOTT MASON  
BEN DOHERTY & BHARAT DAVE & EUGENE CHEAH, MU, 2008  
ABSTRACTION FABRICATION & DIGITAL DESIGN APPLICATIONS









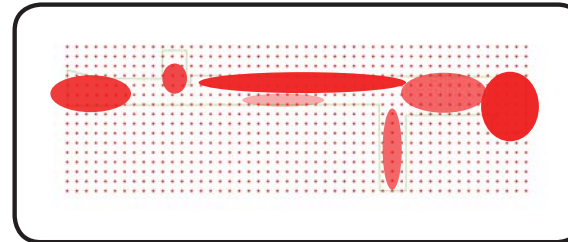
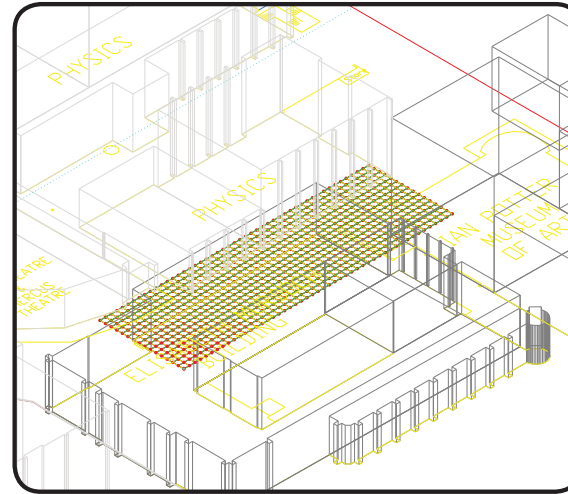






## Untitled No. 5 & Potter Alley

Potter Alley represents an interesting space inside the University Fabric and the connection it makes between the University's facade on Swanston street and the student sanctuary inside. It is well used by students and staff as they weave through the built form and their fellow peers between destinations. Two landmarks at each end of the alley taking the form of coffee shops only serve to further increase traffic and flow and dynamism and richness of experientiality of the place. It is a tunnel like space and the proposed structure for the site should respond to this quality. Therefore the sculptural form of the canopy should reflect the criss crossing and haptic nature of the space and the interactions within, which experientially identifies this place.



## The Idea

Space is divided, in plan, into a 1m grid in the area to be covered. This is not to scale but proportions can be developed and the exported model is scaleable for correct cutting.

Within the prescribed zone the areas of high levels of interaction and motion are identified and mapped, identified right..

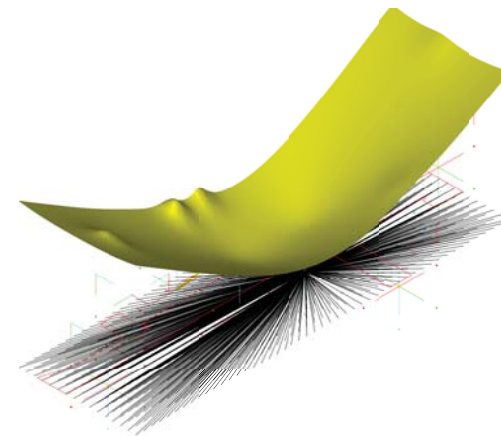
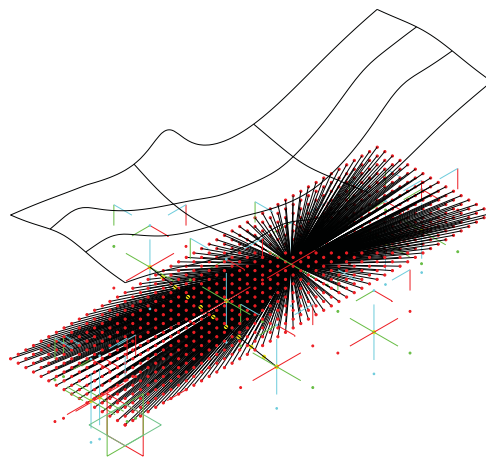
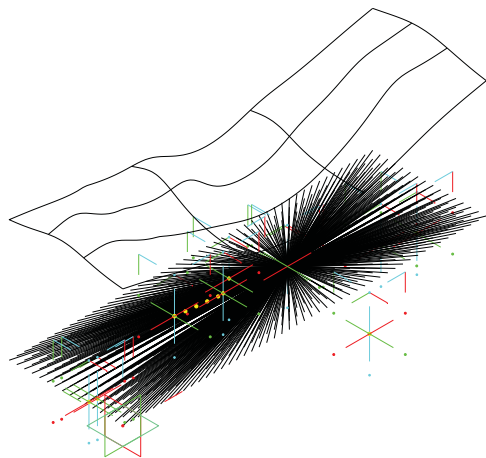
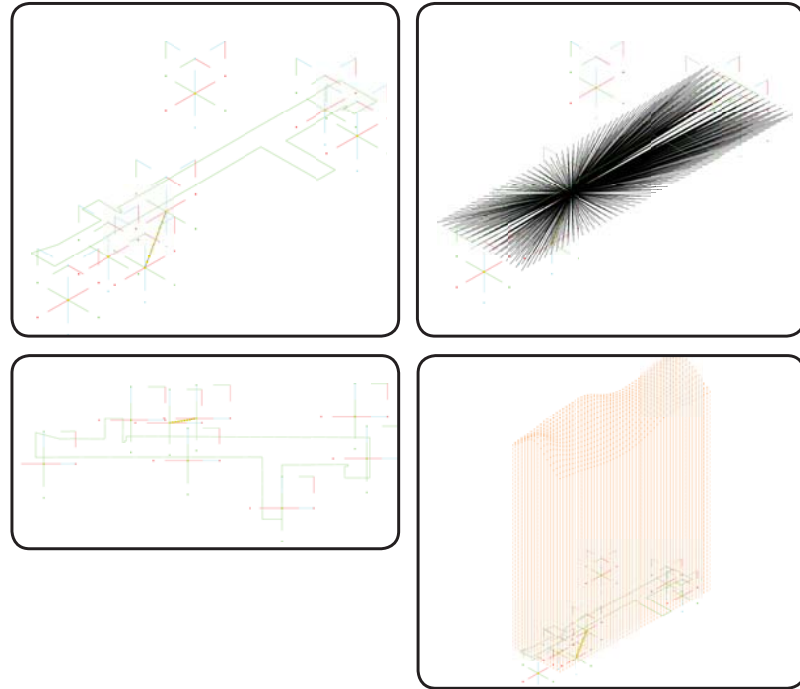
These zones become pressure points pushing up the structure and twisting it accordingly. High levels reflect the higher volume of people and vice versa. ....



Digital Model

Having imported the site model and the grid system established the componentry for the form was established to create a fully interactive model where many iterations of the form could be explored. Above & Below each of the zones identified a control point is placed. Control lines are then added in relation to the 1m grid system. The addition of fractions of the length of these lines are used to generate height control lines.

By controlling each point the form can be modified and teste in different arrangements.

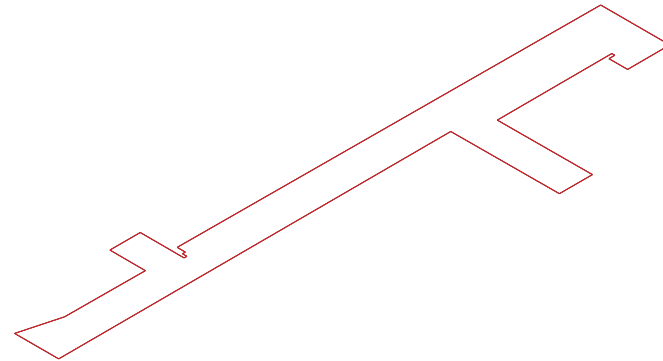
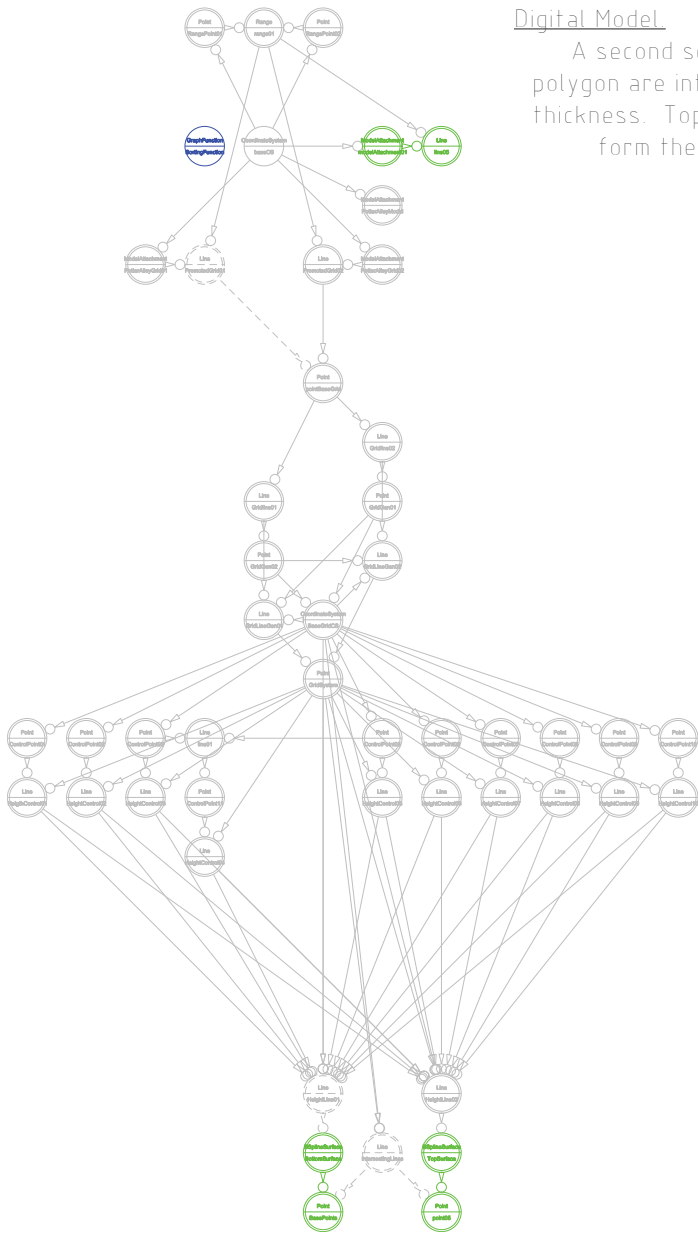
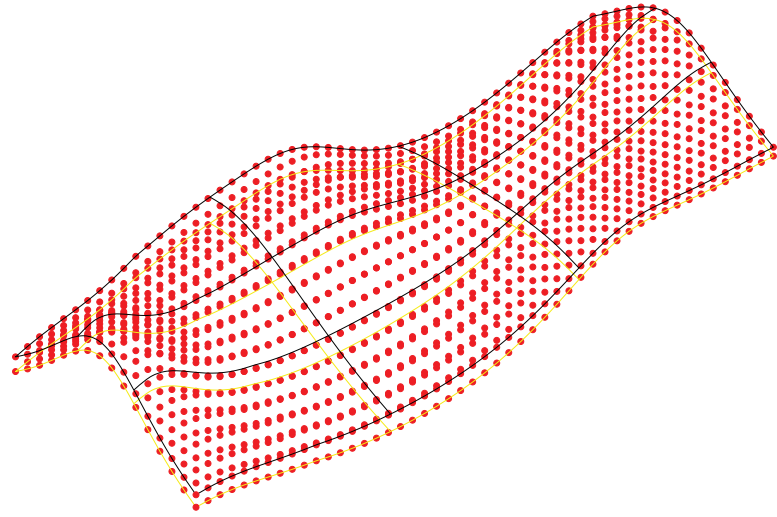


UNTITLED no.5  
SCOTT MASON  
BEN DOHERTY & BHARAT DAVE & EUGENE CHEAH, MU, 2008  
ABSTRACTION FABRICATION & DIGITAL DESIGN APPLICATIONS



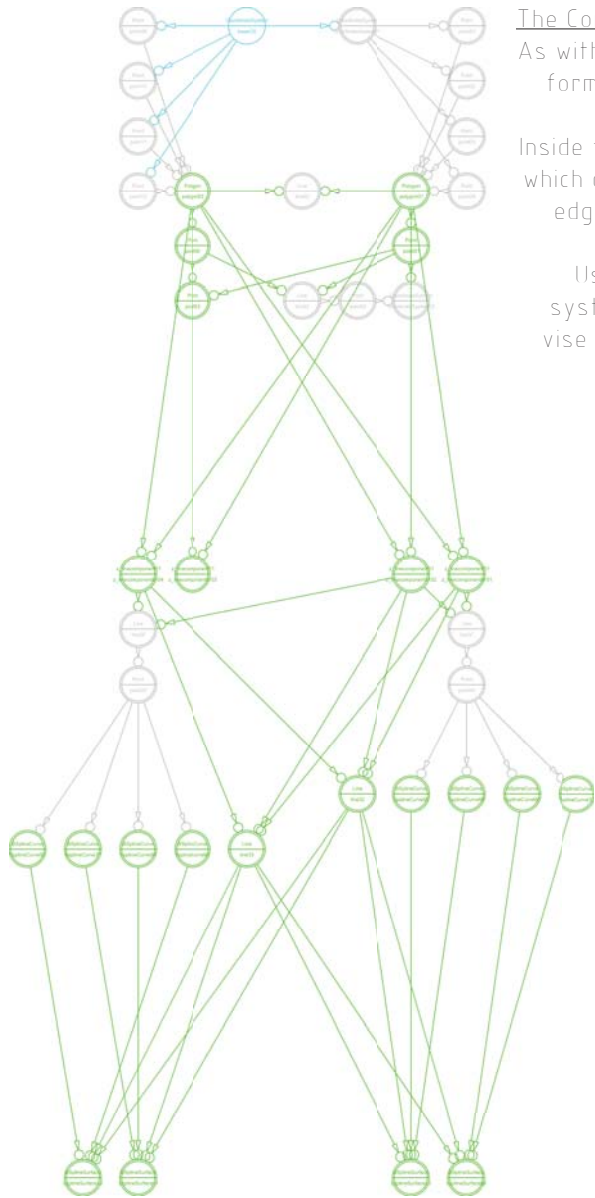
Digital Model

A second set of controlling points and polygon are introduced to give the form a thickness. Top and bottom polygons then form the basis for the component.



UNTITLED no.5  
SCOTT MASON  
BEN DOHERTY & BHARAT DAVE & EUGENE CHEAH, MU, 2008  
ABSTRACTION FABRICATION & DIGITAL DESIGN APPLICATIONS

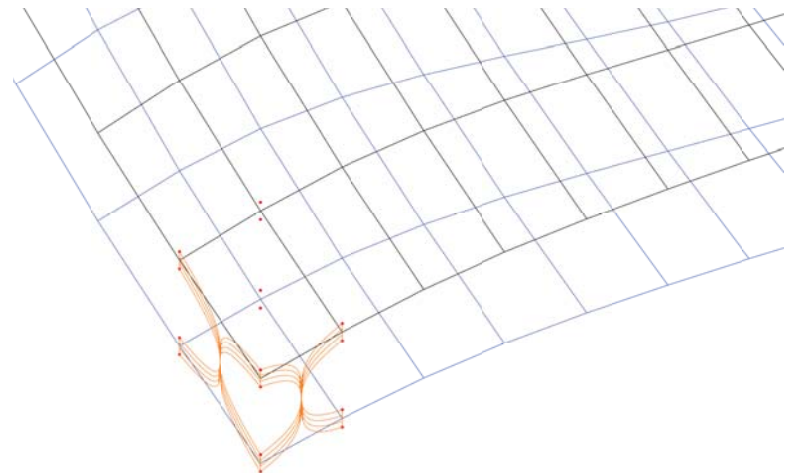
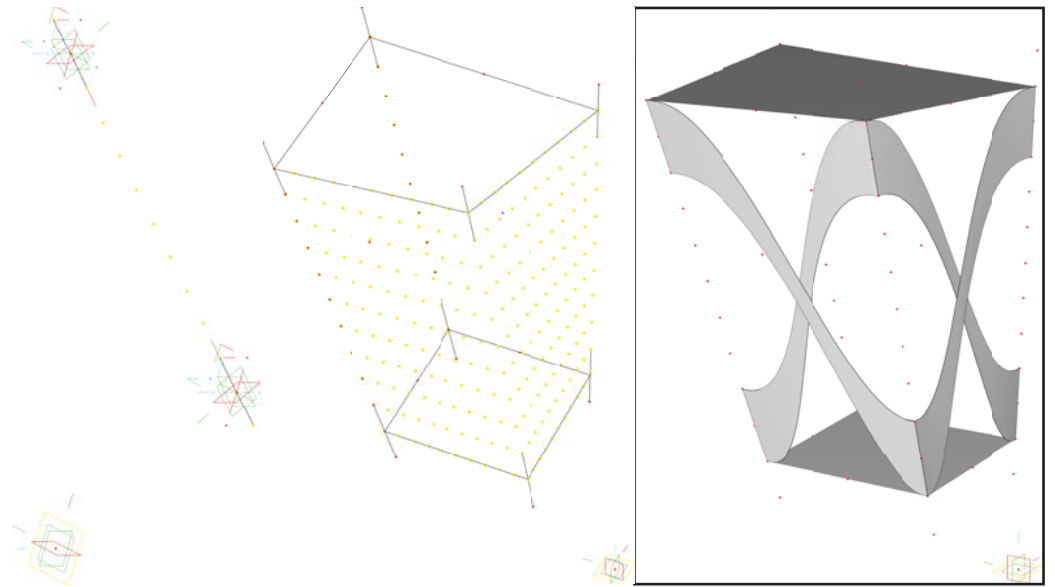




The Component

As with the previous model exploration the form requires a component based on two polygons. Inside the component is another component which divides the corner lines so that each edge will always be the same height and allow a correct joint.

Using the component component a grid system is then used on each face to devise the BSpline Curves which border the BSpline Surfaces.



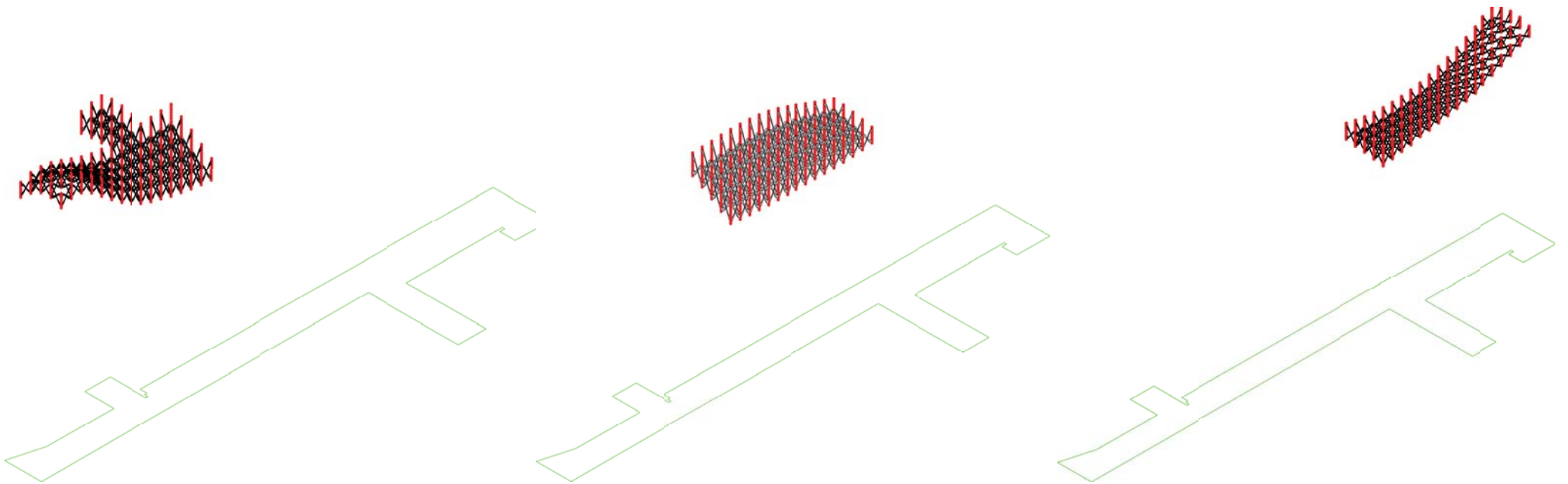
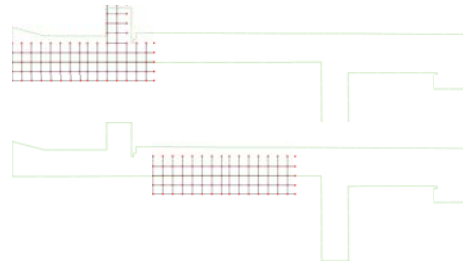
UNTITLED no.5  
SCOTT MASON

BEN DOHERTY & BHARAT DAVE & EUGENE CHEAH, MU, 2008  
ABSTRACTION FABRICATION & DIGITAL DESIGN APPLICATIONS



Dealing with the Large Files.

As the components were added to the printer alley model waiting times between functions became intolerable so the file was divided into sections.

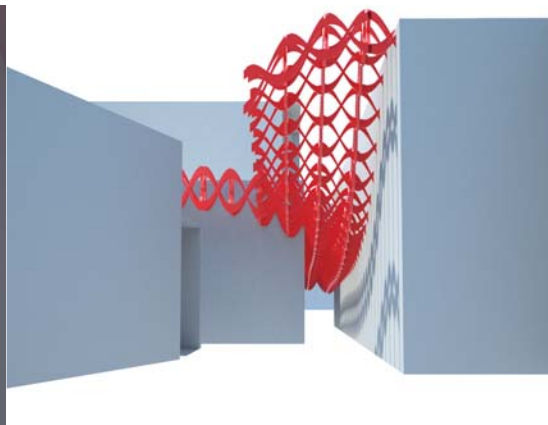
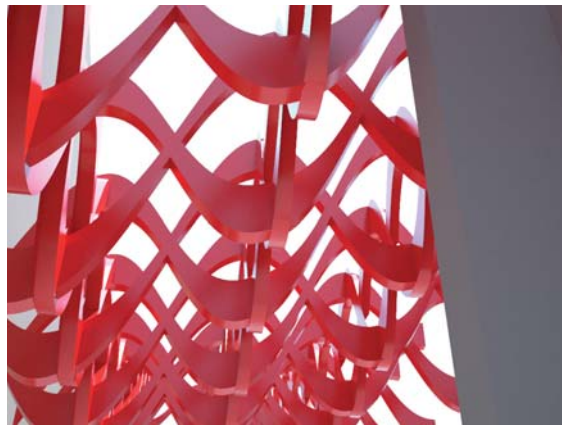
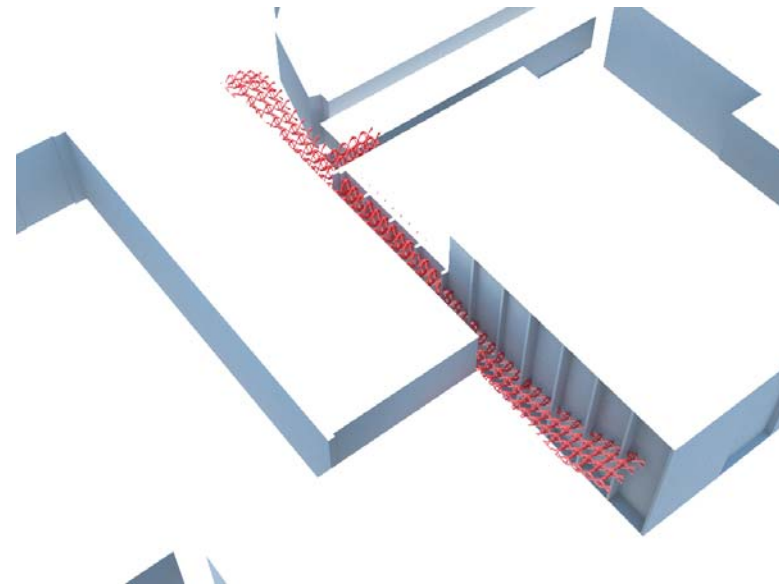


UNTITLED no.5  
SCOTT MASON  
BEN DOHERTY & BHARAT DAVE & EUGENE CHEAH, MU, 2008  
ABSTRACTION FABRICATION & DIGITAL DESIGN APPLICATIONS



Test Renderings

Renderings from the Rhino Model to test clearances and form and light.



UNTITLED no.5  
SCOTT MASON

BEN DOHERTY & BHARAT DAVE & EUGENE CHEAH, MU, 2008  
ABSTRACTION FABRICATION & DIGITAL DESIGN APPLICATIONS



UNTITLED no.5  
SCOTT MASON

BEN DOHERTY & BHARAT DAVE & EUGENE CHEAH, MU, 2008  
ABSTRACTION FABRICATION & DIGITAL DESIGN APPLICATIONS



UNTITLED no.5  
SCOTT MASON

BEN DOHERTY & BHARAT DAVE & EUGENE CHEAH, MU, 2008  
ABSTRACTION FABRICATION & DIGITAL DESIGN APPLICATIONS

